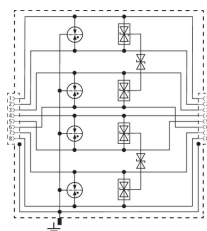


DPA CLE IP66 (929 221)

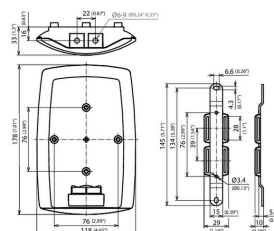
- Indoor / outdoor applications (IP 66)
- GBit Ethernet applications and structured cabling systems according to class E up to 250 MHz
- Power over Ethernet IEEE 802.3 (up to PoE++ / 4PPoE)
- For installation in conformity with the lightning protection zone concept at the boundaries from $0_B -2$ and higher



Figure without obligation



Basic circuit diagram DPA CLE IP66



Dimension drawing DPA CLE IP66

Universal surge arrester for GBit Ethernet applications, Power over Ethernet (IEEE 802.3 compliant up to PoE++ / 4PPoE) and similar applications in structured cabling systems up to class E in indoor and outdoor areas in an IP66 rated enclosure impervious to dust and water. Protection of all pairs with gas discharge tubes and one adapted filter matrix for each pair. Fully shielded surge protective solution with RJ 45 sockets. Universal mounting bracket for pole and wall mounting.

External accessories: Tensioning straps for pole mounting

Type	DPA CLE IP66
Part No.	929 221
SPD class	TYPE 2 Pt1
Nominal voltage (U_N)	5 V
Max. continuous operating voltage d.c. line-line (U_c)	8.5 V
Max. continuous operating voltage (a.c.) (U_c)	6 V
Max. continuous operating voltage (d.c.) pair-pair (PoE) (U_c)	60 V
Nominal current (I_L)	1 A
D1 Lightning impulse current (10/350 μ s) per line (I_{imp})	0.8 kA
D1 Total lightning impulse current (10/350 μ s) (I_{imp})	4 kA
C2 Nominal discharge current (8/20 μ s) line-line (I_n)	400 A
C2 Nominal discharge current (8/20 μ s) line-PG (I_n)	2.5 kA
C2 Total nominal discharge current (8/20 μ s) (I_n)	10 kA
Voltage protection level line-line for I_n C2 (U_p)	≤ 170 V
Voltage protection level line-PG for I_n C2 (U_p)	≤ 600 V
Voltage protection level line-line for I_n C2 (PoE) (U_p)	≤ 120 V
Voltage protection level line-line at 1 kV/ μ s C3 (U_p)	≤ 180 V
Voltage protection level line-PG at 1 kV/ μ s C3 (U_p)	≤ 500 V
Voltage protection level pair-pair at 1 kV/ μ s C3 (PoE) (U_p)	≤ 120 V
Cut-off frequency (f_c)	250 MHz
Operating temperature range (T_U)	-40 °C ... +80 °C
Degree of protection (with installed cables)	IP 66
For mounting on	pole / wall
Connection (input / output)	RJ45 socket / RJ45 socket
Pinning	1/2, 3/6, 4/5, 7/8
Earthing via	enclosure with pole / wall bracket
Enclosure material	aluminium die-cast, nickel plated
Colour	bare surface
Test standards	IEC 61643-21 / EN 61643-21
Approvals	UL, CSA, EAC
External accessories	tensioning straps for pole mounting
Weight	606 g
Customs tariff number (Comb. Nomenclature EU)	85363010
GTIN	4013364342866
PU	1 pc(s)

We reserve the right to introduce changes in performance, configuration and technology, dimensions, weights and materials in the course of technical progress. The figures are shown without obligation.